



Parks, Recreation and Open Space (PROS) Commission Meeting Agenda

Meeting Title: PROS Commission

Meeting Date: January 28, 2025

Attendance:

- Heather Bennett, Chair [present](#)
- Candace Sotwick, Vice Chair [-present](#)
- Toby Levy, Secretary [-present](#)
- Mike Doyle, Member [-present](#)
- Matthew Lunn, Member [-present](#)
- Andrei Teudean, Member [-present](#)
- Jody Walker, Member [-present](#)

Facilitator: Heather Bennett, Chair

Meeting Timeframe: 5:30 p.m. until 7:30 p.m.

- Mary Colton, PROS Director [-present](#)
- Brett Collins, Parks Project Manager [-present](#)
- Jared Musil, Deputy Director of PFOS [-present](#)
- Meagan Arvidson, Deputy Director of Recreation [-present](#)
- Brenda Mooney, Special Projects Analyst [-present](#)
- Diane Lange, Youth Enrichment Coordinator [-present](#)

Meeting Items

Topic	Facilitator	Vote Required?	Details/Notes	Action Items?
Call to Order	Heather	No	Meeting called to order at 5:31 pm	No
Roll Call	Toby	No	See above	No
Public Comment	Heather	No	None	No
Approval of January 28, 2025 Agenda	Heather	Yes	Motion to approve: Jody Second: Candace In Favor: All	Yes
Approval of December 10, 2024 Minutes	Heather	Yes	Motion to approve: Jody Second: Candace In Favor: All	Yes
Discussion Items - Below	Heather	Yes		Yes
Upcoming Engagement Opportunities - TBD	Brenda	No		Yes
Action Item Summary – Below	Brenda	No		Yes
Next Meeting Date: March 25, 2025	Heather	No		No
Adjourn	Heather	No	Meeting adjourned at 7:50 pm	No

Discussion Items

Topic	Facilitator	Notes	Action Item?
Parks and Recreation Update - Staff Spotlight: Youth Services - Open Space Discussion: Prairie Voice Loop and Reata North - Updated Open Space Map	Meagan Diane Jared	Tonight, the Staff Spotlight was on Diane Lange, Youth/Enrichment Coordinator. Diane has been at the Rec Center for 29 years-she is the longest tenured employee at Parks and Rec. She started part-time in 1996 and went full time in 2015. Her duties include special events such as Princess Ball, Fright Night, Milk & Cookies with Santa, Grandparents Picnic, etc.; Gymnastics/Boom Sports and Youth and Adult Programming. Currently, Town-owned open space is 1,076 acres. Overall open space is 3,039.7 acres	Brenda will email all Open Space maps

		<p>(this includes 1963.3 acres of private HOA or Metro District open space). The Williamson potential Open Space site has submitted development plans which may or may not be approved. KOA and Kulback sites are still available.</p> <p>Prairie Voice Loop Open Space measures approximately 133 acres. The town maintains the trail and all amenities within the parcel (trail, benches, signs). The property has third-party Kestrel Falcon nest boxes with a live feed that starts in March. Also, Eagle Scouts do lots of projects here. PROS Committee would like to see more accessibility to this Open Space. Currently the only access is through private yards. Staff will look into the possibilities of adding access corridors so more people can use the space.</p> <p>Reata North Open Space (aka Idyllwilde) measures approximately 135 acres. The developer was permitted to install and maintain a gazebo, playground and trail system. The town maintains everything outside of amenities on this parcel.</p>	<p>from the presentation to the PROS Committee members.</p>
<p>Capital Projects - Salisbury Park Update</p> <ul style="list-style-type: none"> - History - Naming - Project updates - Changes to website - Proposed fundraising milestones 	<p>Brett</p>	<p>Brett emailed the Parker Area Historical Society, The Salisbury Trail Riders and The Colorado Driving Society regarding changing the name of the park from "Salisbury Equestrian Park" to "Salisbury Regional Park". There were no objections from these groups. Candace requested a project update timeline in the form of a bullet point chart from Brett. Brenda will email it to PROS Committee.</p> <p>Motion to approve renaming "Salisbury Equestrian Park" to "Salisbury Regional Park": Matt Second: Candace In favor: All</p> <p>Committee agreed the Parks and Rec website changes submitted for our approval should be made. Updates are: Greater Parker Foundation page to include more project information; tile on</p>	<p>Brett will create a Salisbury Regional Park project timeline in the form of a bullet point chart. Brenda will email it out to Committee.</p>

		ParkerRec.com website will link directly to GPF Friends of Salisbury Park Expansion page; all proceeds will benefit the Salisbury Park Expansion Project.	
<p>Director Update</p> <ul style="list-style-type: none"> - Douglas County Grant Update 	Mary	Staff has been asked to present the grant proposal to the BoCC again – probably due to the fact there is a new county commissioner who hasn't seen it. Meeting will be some time in February, but they haven't received a firm date yet. Mayor Josh Rivero will be attending this meeting along with staff. Mary will keep the Commission notified of the date so we can be kept in the loop.	No
<p>Commission Next Steps:</p> <ul style="list-style-type: none"> - Friends of Salisbury Park - Education Campaign on Open Space 	Heather	<p>Committee would like to create a postcard with a QR code to hand out at events. QR code would link to the trails interactive map on the Parks & Rec website. This map page should show all trails, open spaces and community parks with addresses. Brenda will determine who manages this map page and see if those changes can be made.</p> <p>Discussed creating an education video that can be used on social media and the Parks & Rec website. This would highlight Parker trails, open spaces and parks. It could feature "person on the trail" type interviews asking people what their favorite trail/open space/park is. We would need to submit our ideas for this video to Brooke by July.</p> <p>Discussed the need to have an education table set up at any events happening at Salisbury Park. We would have a large map of the trails/open spaces/parks and the postcard with the QR code. Would like to have a tablecloth and banner with our name for the table.</p> <p>Brenda will post the Engagement Opportunities document on the Teams page. Committee members should review it and add their names to the event they want to attend.</p>	<p>Heather will create a Goals & Objective document</p> <p>Andrei will research what other towns are doing to promote and educate re: Parks and Open Spaces</p>

		Jody suggested Parks & Rec should have an Outdoor Recreation Coordinator position.	
--	--	--	--

Upcoming Engagement Opportunities

Event	Date	Contact	Location
TBD			

Action Item Summary

Topic	Responsible Party	Due Date
Obtain signatures on December 10 minutes, Send to Town Clerk	Heather, Brenda	January 29

Parks, Recreation and Open Space Advisory Commission

January 28, 2025

PARKS, RECREATION AND OPEN SPACE



Staff Spotlight – Youth Services Diane Lange

Work Life

- Division: Recreation
- Position: Youth/Enrichment Coordinator
- Years of Service: 29 years
- Office Location: Recreation Center
- Scope of Duties:
 - Special Events: Princess Ball, Fright Night, etc.
 - Gymnastics/Boom Sports
 - Youth and Adult Programming

Fun Facts

- I'm a Mimi to 1 grandson and another on the way.
- I grew up on a lake in Minnesota and feel most at home in and around water. And I chose to live in a land-locked state???
- I married my high school sweetheart and this year will be 39 years. We have three amazing children.

PARKS, RECREATION AND OPEN SPACE

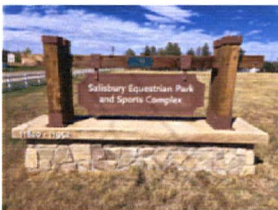


Salisbury Park Naming History

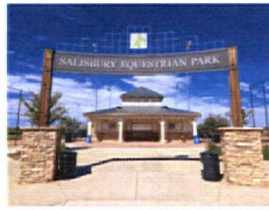
- 1992 South parcel was named Regional Park
- 1992 Parks and Recreation Commission renamed the park Salisbury Equestrian Park
- 1996 North parcel (current ballfields) was named Salisbury Belcher Regional Park
- 2001 Entire park named Salisbury Equestrian Park and Sports Complex
- 2014 North parcel was named Salisbury Park North on the master plan

The recommendation is to rename Salisbury Equestrian Park to “Salisbury Regional Park”

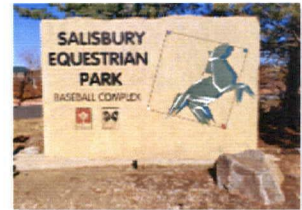
Existing Signs



Update the monument sign



Update the ballfield sign



Remove the flagstone sign

PARKS, RECREATION AND OPEN SPACE



Greater Parker Foundation Update

Friends of Salisbury Park Expansion



Help make the Salisbury Park expansion a reality! With 91 acres ready for transformation, your donation brings multi-use fields, sports courts, play areas, pavilions, and more to life. Join us in building a vibrant community hub with amenities for all. Together, let's shape the future of Salisbury Park.

Help make the Salisbury Park expansion in Parker a reality!

\$0 raised by 7 donors

18 days left

Donate

Share this page

Giving Activity

There aren't any donations yet.



- Updates made to Greater Parker Foundation to include more project information.
- Tile on ParkerRec.com website will link directly to GPF Friends of Salisbury Park Expansion page.
- All proceeds will benefit the Salisbury Park Expansion Project.

PARKS, RECREATION AND OPEN SPACE

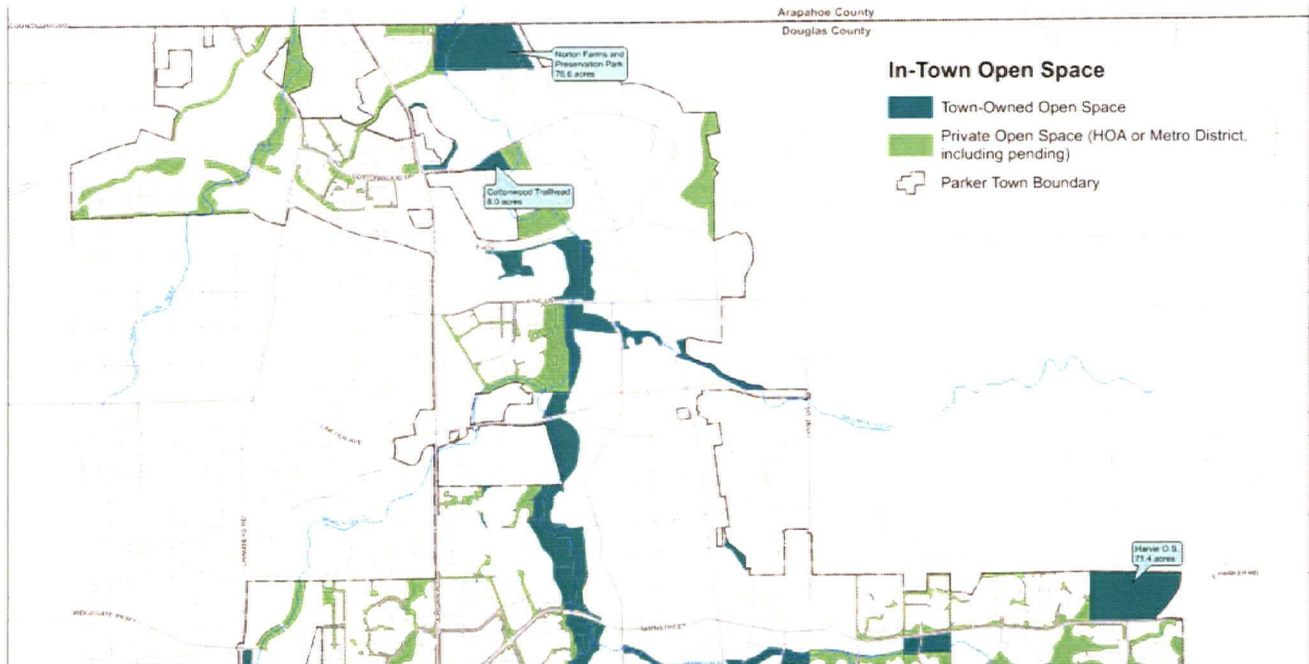


Open Space Totals

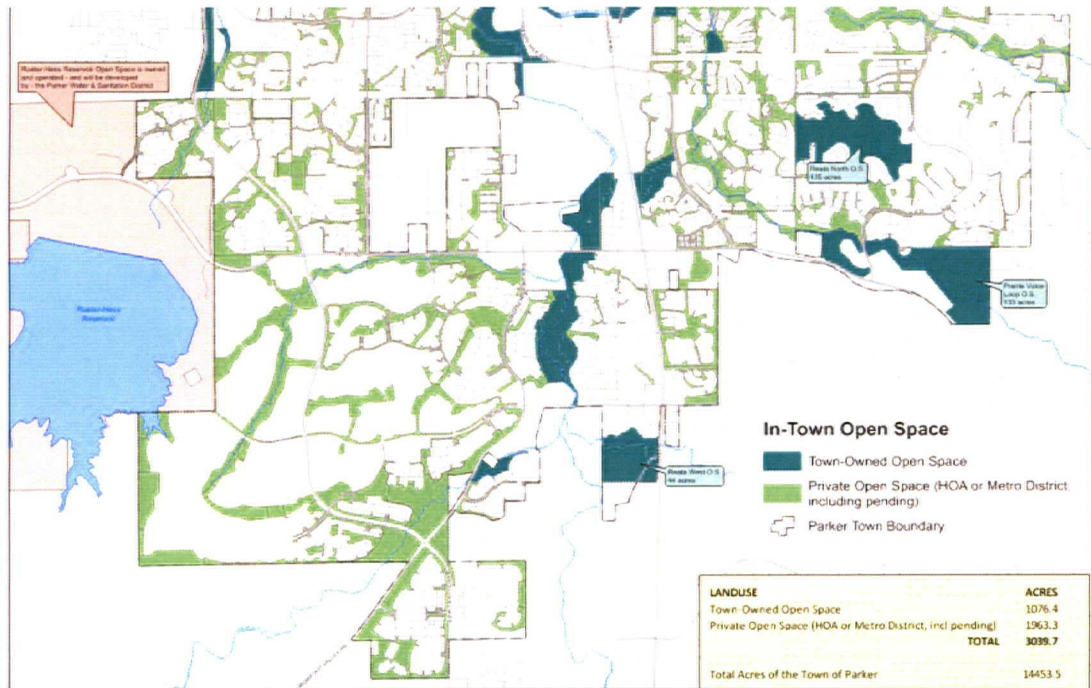
- 2024 Town-owned open space 1,076 acres = 17 Acres per 1,000 population
- 2024 Overall open space 3,039.7 acres = 45 acres per 1,000 population
- Based on 67,376 town population
- Master Plan recommends 18 acres per 1,000 population

LANDUSE	ACRES
Town-Owned Open Space	1076.4
Private Open Space (HOA or Metro District, incl pending)	1963.3
TOTAL	3039.7
 Total Acres of the Town of Parker	 14453.5
 Percentage of Town that is Existing or Pending Open Space	 21.0%

PARKS, RECREATION AND OPEN SPACE 



PARKS, RECREATION AND OPEN SPACE 



Prairie Voice Loop Open Space

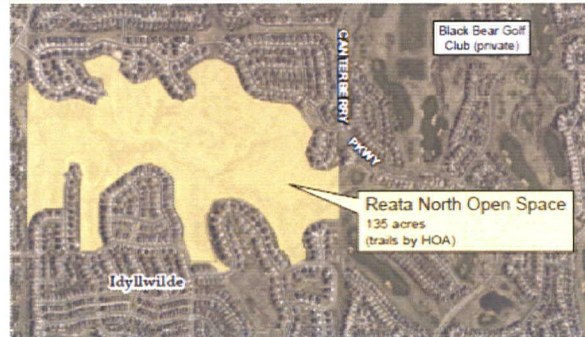
- Was developed, named and deeded to the Town back in approximately 2003 by the same developer as Tallman Park. It measures approximately 133 acres.
- We routinely maintain the trail and all amenities within the parcel (trail, benches, signs).
- Because this property has a unique prairie vegetation and look, we mow only a buffer strip adjacent to the soft surface trail, as necessary, and chemically spot treat for weeds; otherwise limit maintenance to hazards only.
- Permitted on the property are third-party Kestrel Falcon nest boxes (a representative live feed is posted on the Parks and Rec website beginning approximately late March).



Reata North Open Space (aka Idyllwilde)

- Was deeded to the Town in approximately 2003. The developer, through various agreements, was permitted to install and maintain a gazebo, playground and trail system. It measures approximately 135 acres.
- Parks, Forestry and Open Space maintains everything outside of amenities on this parcel.

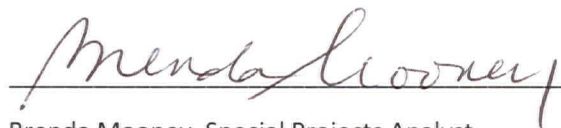
For reference, Harvie Open Space is approximately 71 acres.



Commission Next Steps:

- Friends of Salisbury Park
- Education Campaign on Open Space

Minutes Prepared By:

A handwritten signature in black ink, appearing to read "Brenda Mooney", written over a horizontal line.

Brenda Mooney, Special Projects Analyst

Minutes Approved By:

A handwritten signature in blue ink, appearing to read "Candace Sotwick", written over a horizontal line.

Candace Sotwick, Vice Chair – PROS Commission